

LUMINAIRE PHOTOMETRIC TEST REPORT

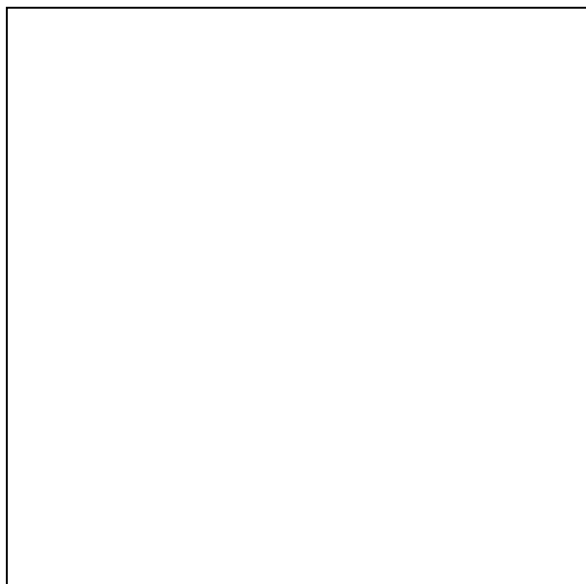
Luminaire Property

Manufacturer: Ledoux	Voltage(V): 219.08 V
Luminaire Type: DSA2006-1	Current(A): 0.0580 A
Lamp Type: 朗明纳斯SST-20-W	Power(W): 6.95 W
Luminous Width: 32.5 mm	Power Factor: 0.5460
Luminous Length: 32.5 mm	Lamp Luminous Flux: 285.73
Luminous Height: 2 mm	

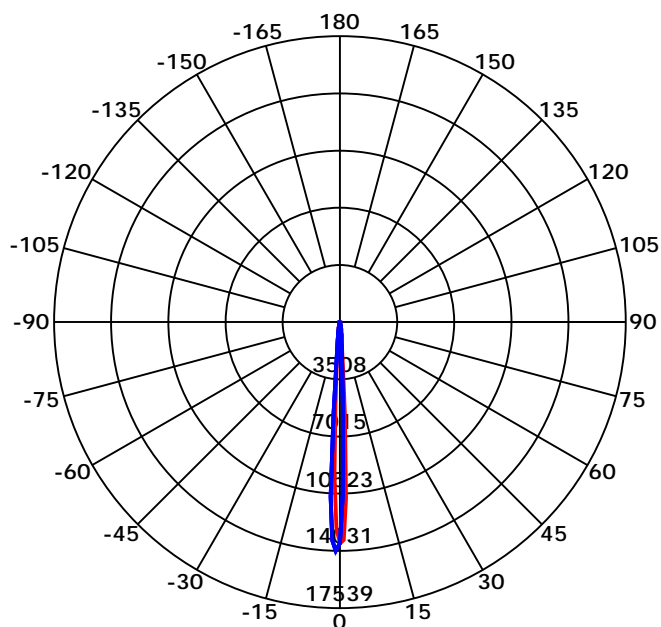
Photometric Results

CIE Class: Direct	Max. Intensity: 14030.94 cd
Luminaire Luminous Flux: 285.7334	Max. Intensity Angle: C=270 Gamma=1
Downward Ratio: 100.00%	Upward Ratio: 0.00%
Luminaire Efficacy Rating(LER): 41.11 lm/W	Efficacy: 100.00%
Beam Angle(50%) C0-180,C90-270: 5.4,5.5	Center Intensity: 13579.25 cd
Field Angle(10%) C0-180,C90-270: 10.9,10.7	

Picture of Luminaire



Luminous Intensity Distribution Curve



Beam Angle(50%) C0-180,C90-270: 5.4 deg,5.5 deg

C0-180 — C90-270

C Range: 0 - 360 Deg

C Interval: 30.0 Deg

Test Speed: High

Temperature: 30°C

Operators: 卢棋浩

Test Date: 2020/12/14 9:39:20

G Range: 0 - 90 Deg

G Interval: 1.0 Deg

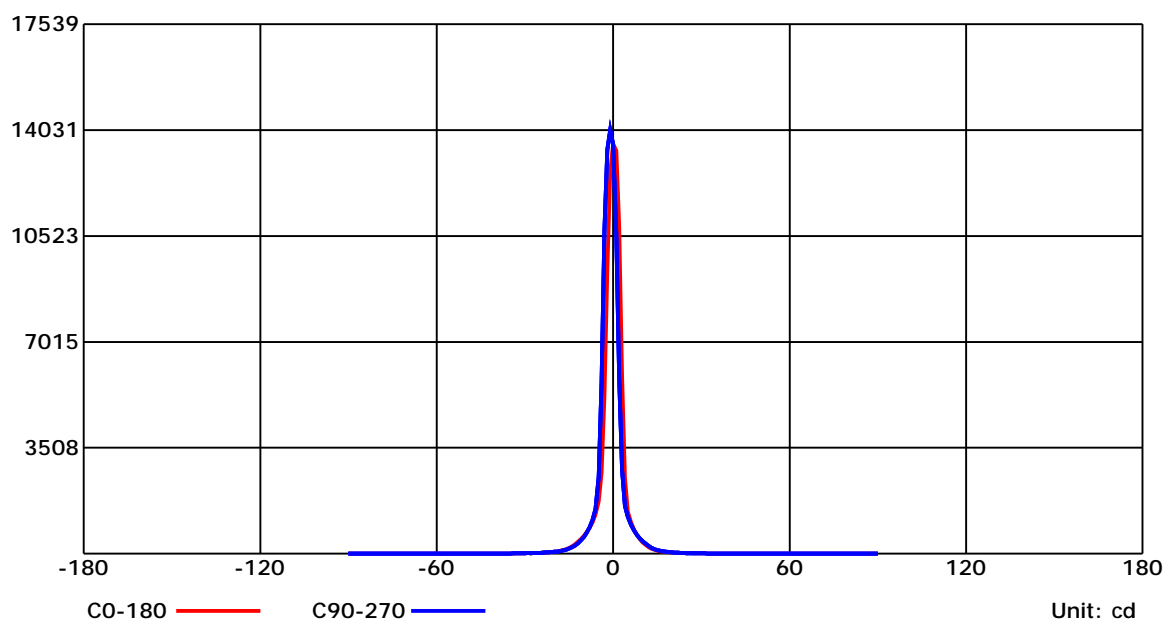
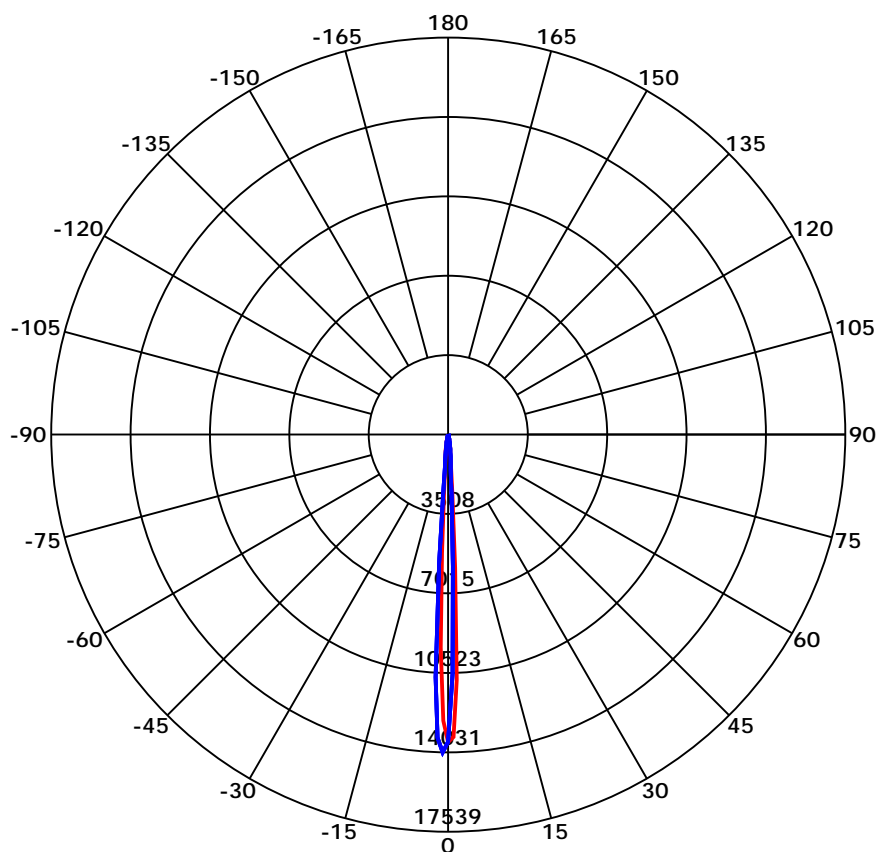
Test System: Huipu CPM-1800B Goniophotometer

Humidity: /

Test Distance: 7.76 m

Remarks:

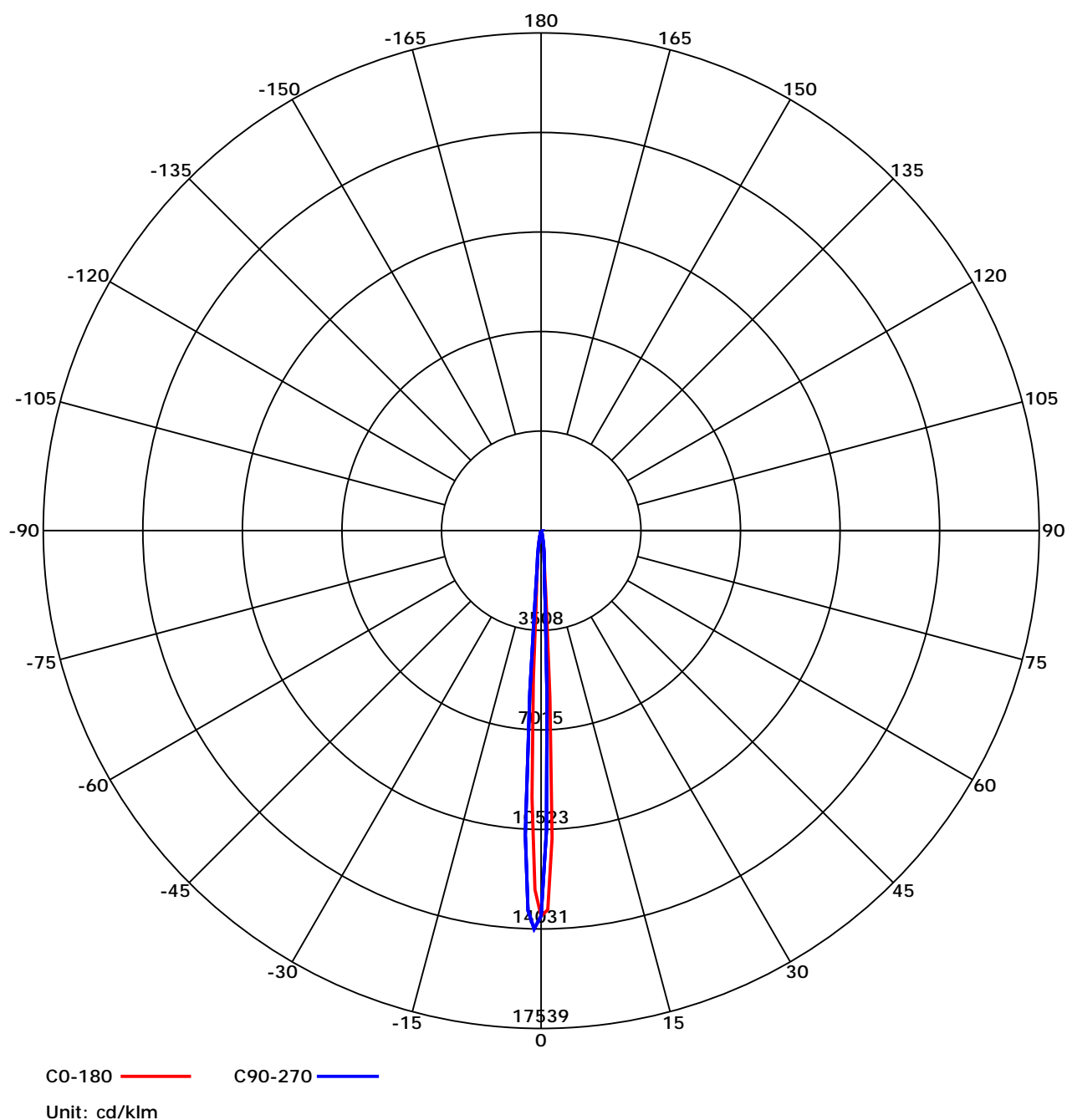
Luminous Intensity Distribution Curve



C Range: 0 - 360 Deg
 C Interval: 30.0 Deg
 Test Speed: High
 Temperature: 30°C
 Operators: 卢棋浩
 Test Date: 2020/12/14 9:39:20

G Range: 0 - 90 Deg
 G Interval: 1.0 Deg
 Test System: Huipu CPM-1800B Goniophotometer
 Humidity: /
 Test Distance: 7.76 m
 Remarks:

Luminous Intensity Distribution Curve



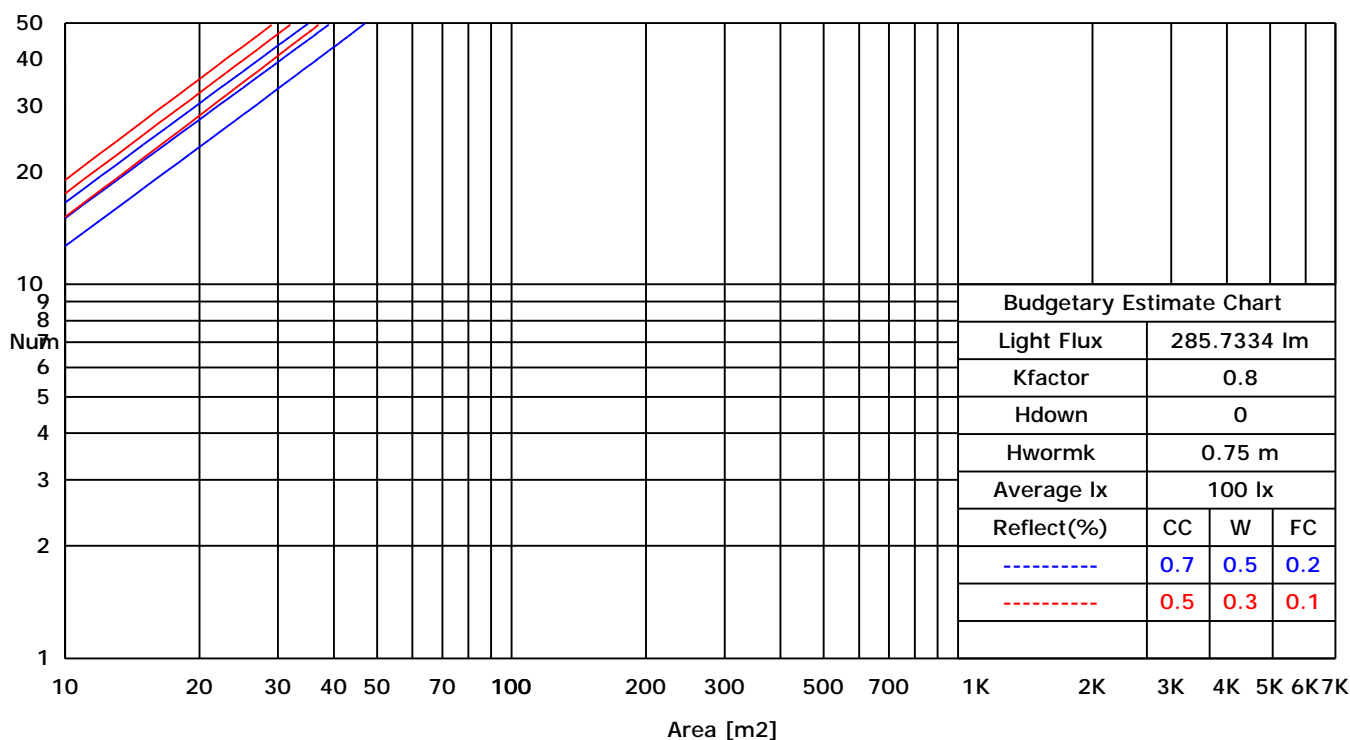
C Range: 0 - 360 Deg
C Interval: 30.0 Deg
Test Speed: High
Temperature: 30°C
Operators: 卢棋浩
Test Date: 2020/12/14 9:39:20

G Range: 0 - 90 Deg
G Interval: 1.0 Deg
Test System: Huipu CPM-1800B Goniophotometer
Humidity: /
Test Distance: 7.76 m
Remarks:

UTILIZATION FACTORS TABLE

RHOCC	80			70			50			30			10			0
RHOW	50	30	10	50	30	10	50	30	10	50	30	10	50	30	10	0
RCR	COEFFICIENTS OF UTILIZATION FOR RHOFC=20															
0	1.19	1.19	1.19	1.16	1.16	1.16	1.11	1.11	1.11	1.06	1.06	1.06	1.02	1.02	1.02	1.00
1	0.48	0.40	0.34	0.49	0.41	0.34	0.50	0.41	0.33	0.49	0.40	0.32	0.48	0.39	0.30	0.25
2	0.42	0.36	0.32	0.44	0.37	0.32	0.46	0.38	0.31	0.46	0.38	0.30	0.45	0.36	0.29	0.24
3	0.39	0.34	0.31	0.41	0.35	0.30	0.43	0.36	0.30	0.44	0.35	0.29	0.43	0.35	0.27	0.23
4	0.37	0.32	0.29	0.39	0.33	0.29	0.41	0.34	0.28	0.42	0.34	0.27	0.42	0.33	0.26	0.22
5	0.35	0.31	0.29	0.37	0.32	0.28	0.39	0.32	0.27	0.40	0.32	0.27	0.40	0.32	0.25	0.22
6	0.33	0.30	0.28	0.35	0.30	0.27	0.37	0.31	0.27	0.38	0.31	0.26	0.39	0.31	0.25	0.21
7	0.32	0.29	0.27	0.34	0.30	0.27	0.36	0.30	0.26	0.37	0.30	0.25	0.38	0.30	0.24	0.21
8	0.31	0.28	0.27	0.33	0.29	0.26	0.35	0.29	0.26	0.36	0.29	0.25	0.37	0.29	0.24	0.21
9	0.30	0.28	0.26	0.32	0.28	0.26	0.34	0.28	0.25	0.35	0.29	0.24	0.36	0.28	0.23	0.20
10	0.30	0.27	0.26	0.31	0.28	0.25	0.33	0.28	0.25	0.34	0.28	0.24	0.35	0.28	0.23	0.20

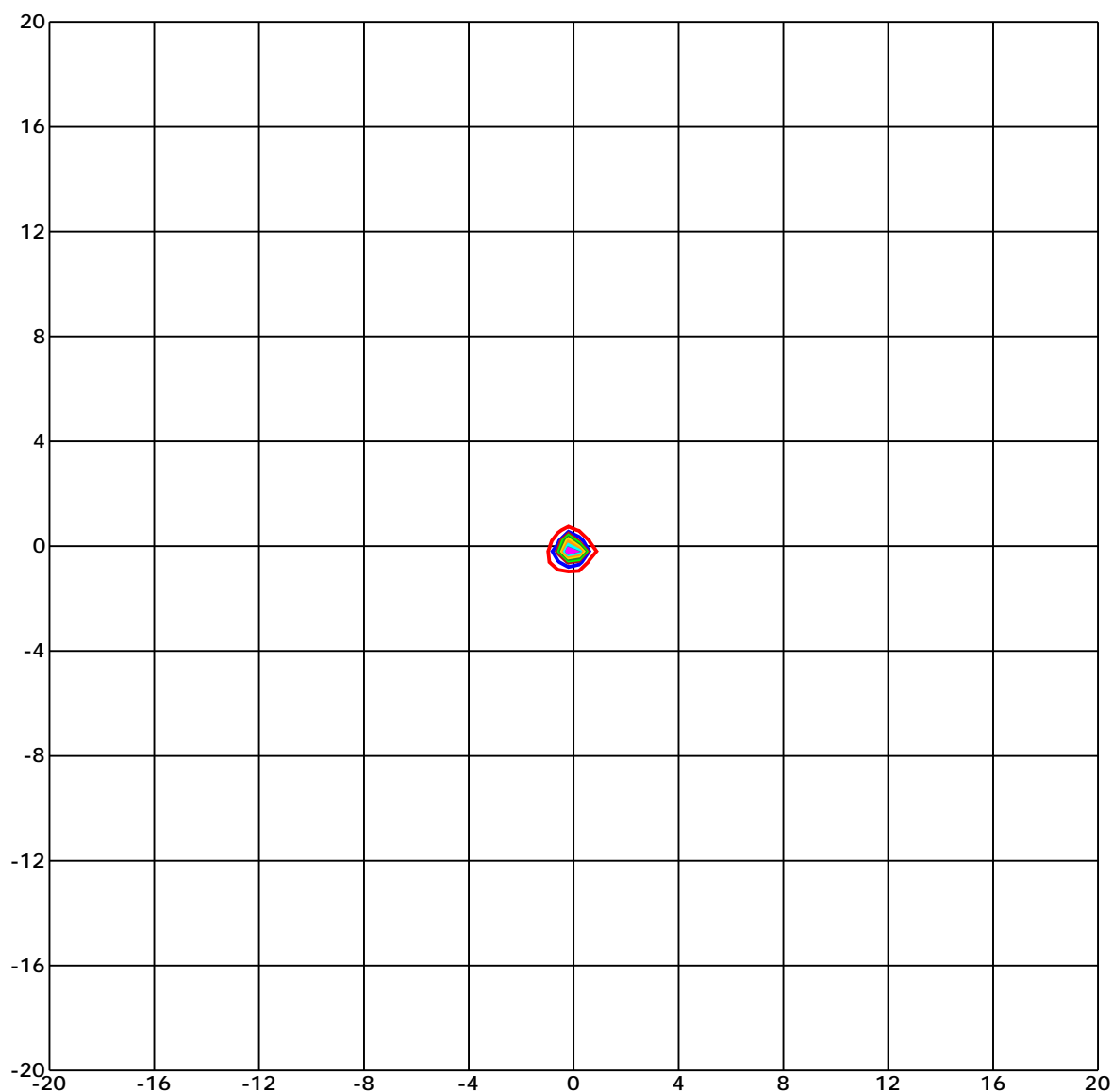
LUMINAIRE BUDGETARY ESTIMATE DIAGRAM



C Range: 0 - 360 Deg
 C Interval: 30.0 Deg
 Test Speed: High
 Temperature: 30°C
 Operators: 卢棋浩
 Test Date: 2020/12/14 9:39:20

G Range: 0 - 90 Deg
 G Interval: 1.0 Deg
 Test System: Huipu CPM-1800B Goniophotometer
 Humidity: /
 Test Distance: 7.76 m
 Remarks:

ISOLX DIAGRAM



Unit of illumination: lx Height of plane: 8.0(m)/26.25(ft)

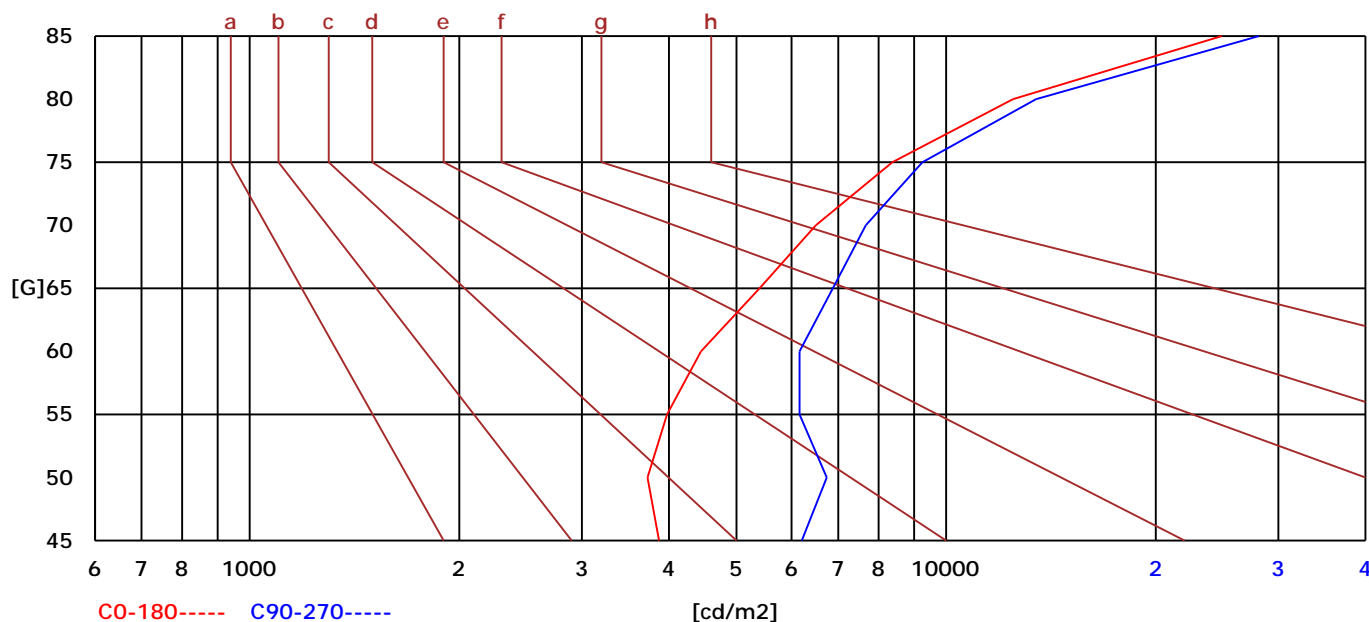
- | | |
|-------------------|-------------------|
| — 201.603(1%Emax) | — 109.567(1%Emax) |
| — 197.22(1%Emax) | — 87.653(1%Emax) |
| — 175.307(1%Emax) | — 65.74(0%Emax) |
| — 153.393(1%Emax) | — 43.827(0%Emax) |
| — 131.48(1%Emax) | — 21.913(0%Emax) |

C Range: 0 - 360 Deg
 C Interval: 30.0 Deg
 Test Speed: High
 Temperature: 30°C
 Operators: 卢棋浩
 Test Date: 2020/12/14 9:39:20

G Range: 0 - 90 Deg
 G Interval: 1.0 Deg
 Test System: Huipu CPM-1800B Goniophotometer
 Humidity: /
 Test Distance: 7.76 m
 Remarks:

BRIGHT LIMIT DIAGRAM

C/G	45	50	55	60	65	70	75	80	85
C0	3870	3725	3976	4447	5396	6501	8370	12476	24857
C90	6208	6741	6163	6157	6880	7668	9251	13461	28127
Dazzle	Quality	Illuminance	---	---	---	---	---	---	---
1.15	A	2000	1000	500	<=300				
1.5	B		2000	1000	500	<=300			
1.85	C			2000	1000	500	<=300		
2.2	D				2000	1000	500	<=300	
2.55	E					2000	1000	500	<=300
---	---	a	b	c	d	e	f	g	h



C Range: 0 - 360 Deg

C Interval: 30.0 Deg

Test Speed: High

Temperature: 30°C

Operators: 卢棋浩

Test Date: 2020/12/14 9:39:20

G Range: 0 - 90 Deg

G Interval: 1.0 Deg

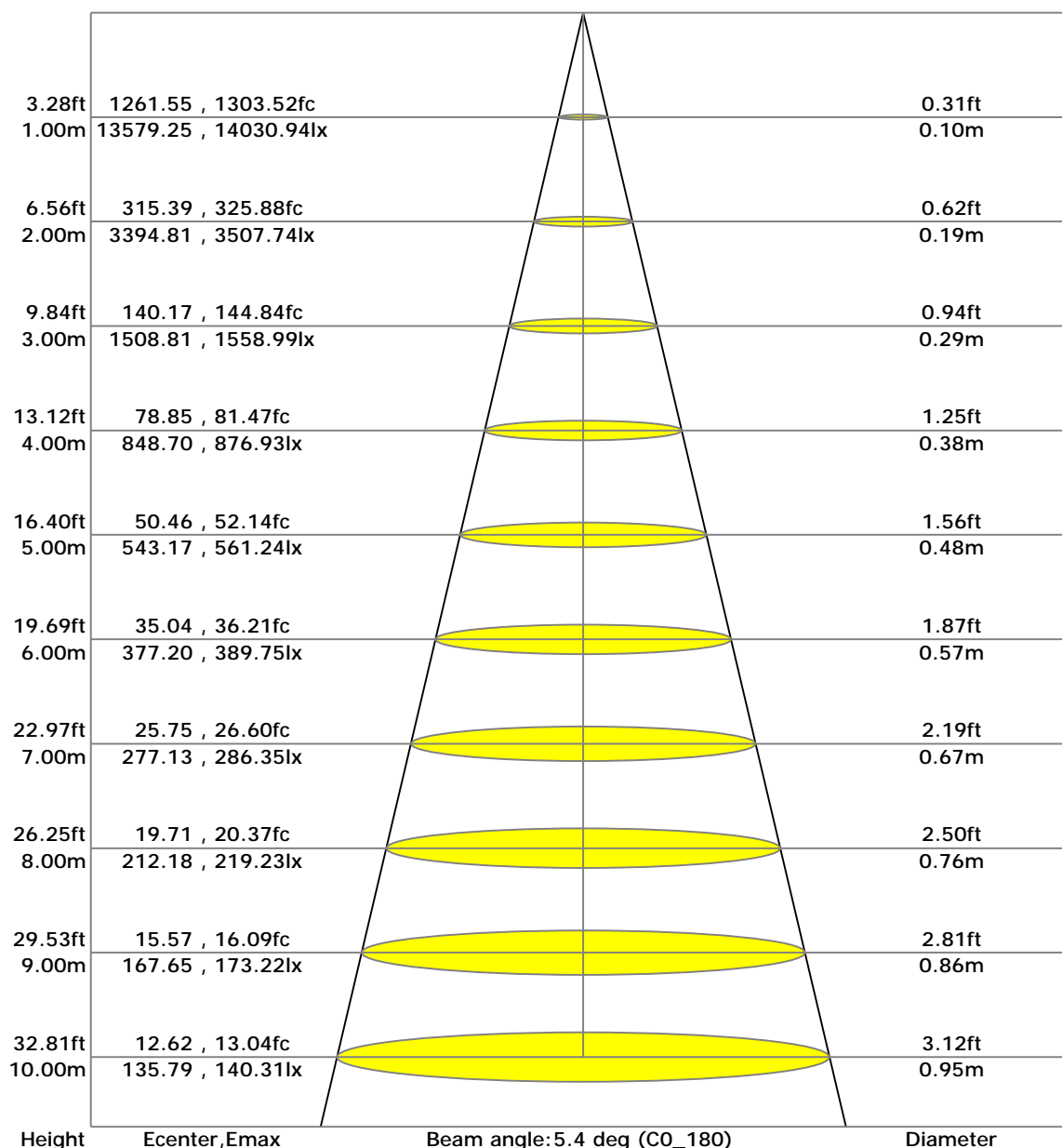
Test System: Huipu CPM-1800B Goniophotometer

Humidity: /

Test Distance: 7.76 m

Remarks:

LX-DISTANCE DIAGRAM



C Range: 0 - 360 Deg

C Interval: 30.0 Deg

Test Speed: High

Temperature: 30°C

Operators: 卢棋浩

Test Date: 2020/12/14 9:39:20

G Range: 0 - 90 Deg

G Interval: 1.0 Deg

Test System: Huipu CPM-1800B Goniophotometer

Humidity: /

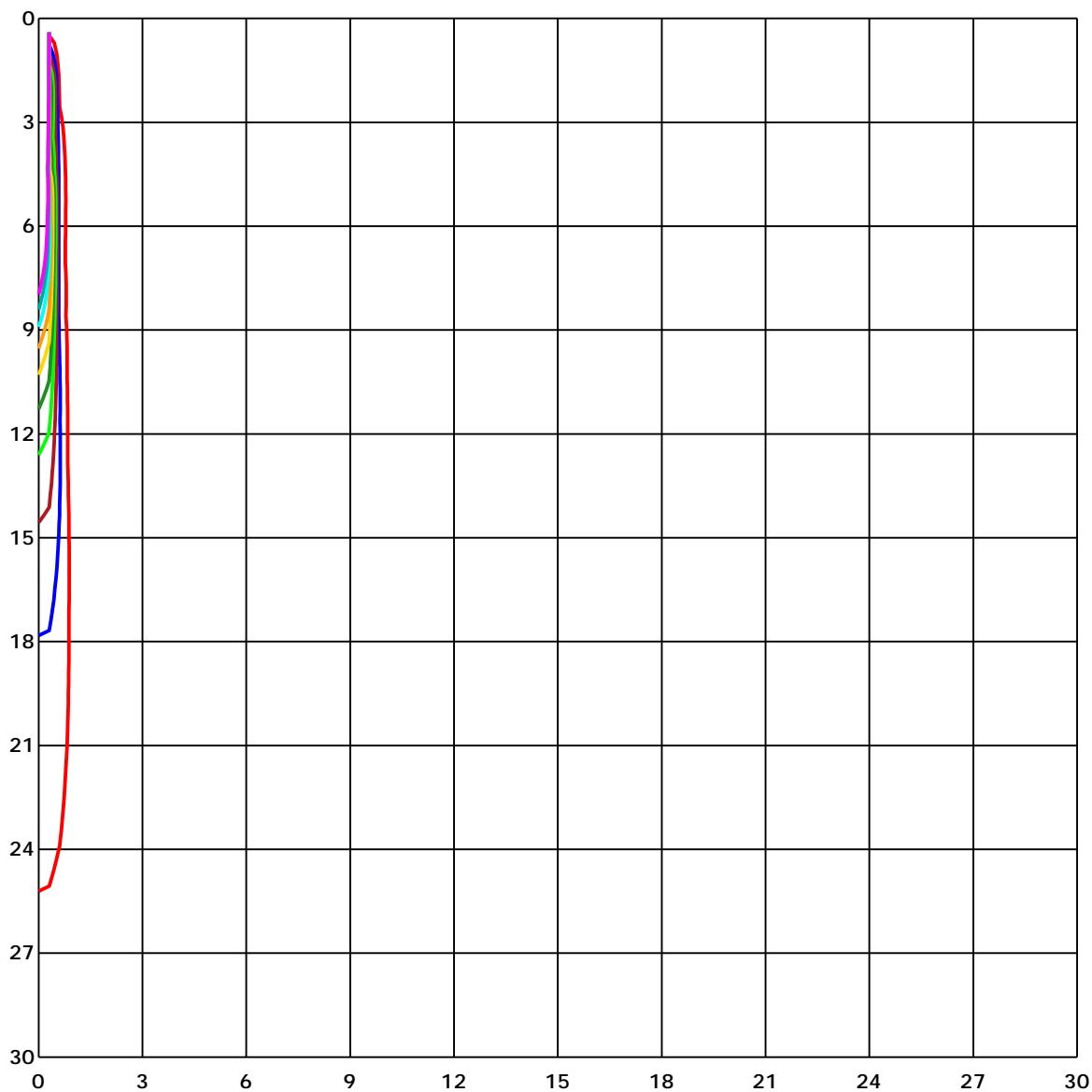
Test Distance: 7.76 m

Remarks:

UGR(Unified Glare Rating) TABLE

RHOCC	70	70	50	50	30	70	70	50	50	30
RHOW	70	70	50	50	30	70	70	50	50	30
RHOF	20	20	20	20	20	20	20	20	20	20
Room Size X Y	Viewed Endwise					Viewed Crosswise				
2H 2H	11.24	11.37	11.44	11.56	11.81	12.07	12.20	12.28	12.39	12.64
3H	11.68	11.82	11.89	12.01	12.26	12.37	12.51	12.58	12.70	12.95
4H	11.86	11.99	12.07	12.19	12.44	12.49	12.63	12.71	12.82	13.08
6H	11.95	12.08	12.17	12.29	12.54	12.55	12.69	12.78	12.90	13.15
8H	11.93	12.07	12.16	12.28	12.54	12.54	12.68	12.77	12.89	13.15
12H	11.92	12.06	12.15	12.27	12.53	12.53	12.67	12.76	12.88	13.14
4H 2H	16.13	16.27	16.35	16.47	16.72	16.61	16.74	16.82	16.94	17.19
3H	16.83	16.97	17.06	17.18	17.44	17.25	17.39	17.48	17.60	17.86
4H	17.15	17.29	17.39	17.51	17.78	17.52	17.66	17.76	17.88	18.15
6H	17.41	17.55	17.66	17.77	18.05	17.73	17.87	17.98	18.10	18.37
8H	17.50	17.64	17.75	17.87	18.15	17.81	17.94	18.06	18.18	18.45
12H	17.54	17.68	17.80	17.92	18.20	17.84	17.98	18.10	18.22	18.50
8H 4H	19.26	19.40	19.49	19.61	19.87	19.45	19.59	19.68	19.80	20.06
6H	21.23	21.36	21.49	21.61	21.89	21.40	21.53	21.66	21.78	22.06
8H	21.45	21.59	21.73	21.84	22.13	21.61	21.74	21.88	21.99	22.28
12H	21.64	21.77	21.92	22.03	22.32	21.77	21.90	22.05	22.17	22.46
12H 4H	22.29	22.42	22.55	22.66	22.94	22.28	22.41	22.54	22.65	22.93
6H	22.92	23.05	23.19	23.31	23.59	22.94	23.07	23.21	23.32	23.61

SPACE ISOLX DIAGRAM



Unit of illumination: lx

- | | |
|-----------|-----------|
| — 213.694 | — 106.847 |
| — 192.325 | — 85.478 |
| — 170.955 | — 64.108 |
| — 149.586 | — 42.739 |
| — 128.216 | — 21.369 |

C Range: 0 - 360 Deg

C Interval: 30.0 Deg

Test Speed: High

Temperature: 30°C

Operators: 卢棋浩

Test Date: 2020/12/14 9:39:20

G Range: 0 - 90 Deg

G Interval: 1.0 Deg

Test System: Huipu CPM-1800B Goniophotometer

Humidity: /

Test Distance: 7.76 m

Remarks:

LUMINOUS DISTRIBUTION INTENSITY DATA

Gamma\C	C0	C30	C60	C90	C120	C150	C180	C210	C240	C270
G0	13579.25	10950.57	13461.22	13568.59	13931.34	13691.8	13579.25	10950.57	13461.22	13568.59
G1	13356.26	5776.55	10257.59	10575.6	13355.6	12375.32	12642.2	13715.82	13976.39	14030.94
G2	10845.55	2410.21	5344.98	5829.43	10048.21	8567.94	9407.44	13915.87	13294.78	13388.54
G3	5903.07	1422.82	2385.94	2784.34	5130.6	4454.12	5241.52	13372.82	10858.68	10729.93
G4	2520.11	1072.78	1425.17	1586.07	2554.25	2311.21	2675.35	10399.94	6230.96	5685.21
G5	1387.96	829.74	1113.6	1220.67	1647.13	1573.67	1727.88	5938.42	2964.51	2534.74
G6	1040.02	657.46	870.93	959.09	1253.67	1213.81	1292.03	3008.47	1665.68	1474.07
G7	809.51	522.93	705.21	781.02	1004.91	993.95	1042.61	1781.78	1213.69	1126.49
G8	627.29	408.03	571.95	633.01	829.2	824.68	865.51	1307.38	964.93	883.21
G9	488.24	317.65	460.48	513.6	686.9	684.92	721.05	1025.69	779.04	697.74
G10	377.56	245.57	366.0	414.54	566.35	567.13	592.0	841.96	628.25	555.75
G11	287.36	189.32	285.61	329.09	459.64	465.66	482.22	696.6	505.05	439.89
G12	217.2	145.91	219.67	254.18	374.19	376.72	390.33	569.06	405.08	344.81
G13	163.37	115.68	170.72	197.57	303.08	300.43	315.12	458.44	321.92	267.25
G14	125.31	93.22	136.03	155.24	242.32	237.56	249.3	371.9	252.61	212.09
G15	100.8	78.95	110.2	122.12	192.52	186.61	196.43	298.32	198.48	168.37
G16	81.59	64.31	90.33	96.17	152.95	144.88	153.25	236.78	154.46	132.0
G17	69.31	54.08	74.67	77.5	122.06	116.16	121.28	183.12	120.8	103.88
G18	54.92	50.4	62.69	64.49	100.32	93.76	96.65	142.47	95.87	85.21
G19	50.16	38.84	53.35	54.08	80.33	78.34	79.31	113.09	79.13	71.24
G20	40.77	33.0	44.38	44.08	69.91	63.35	66.6	91.59	67.99	62.2
G21	36.61	28.3	38.54	38.0	55.34	51.06	54.56	75.21	56.12	54.44
G22	30.23	23.79	32.82	31.61	49.2	41.55	47.57	64.43	49.86	48.96
G23	25.65	20.29	28.24	28.3	38.6	33.96	38.6	54.14	38.9	41.43
G24	22.94	18.01	23.67	23.0	33.06	28.24	33.18	45.22	33.3	35.29
G25	18.61	20.17	20.78	18.49	28.36	23.06	28.24	38.6	28.18	29.15
G26	20.11	13.13	18.25	18.13	22.88	19.81	23.0	33.12	23.06	23.18
G27	13.73	12.59	18.13	14.15	19.81	17.82	19.87	28.18	21.14	19.63
G28	12.65	11.02	17.28	12.53	17.94	18.43	17.88	22.94	19.21	17.88
G29	11.92	9.45	13.13	11.92	20.35	12.95	19.87	19.33	13.91	20.17
G30	9.82	8.49	12.71	9.94	13.55	12.4	13.31	17.88	12.59	13.43
G31	8.85	7.71	11.26	8.85	12.65	9.82	12.59	18.79	10.78	12.59
G32	7.95	7.47	9.51	7.71	11.26	8.31	10.6	13.13	9.33	11.44
G33	7.53	7.41	8.43	7.53	9.51	7.53	9.27	12.65	8.13	9.63
G34	7.53	6.2	7.71	7.41	8.31	7.65	8.07	10.66	7.53	8.67
G35	7.11	5.0	7.65	6.26	7.65	6.8	7.59	9.27	7.53	7.83
G36	5.42	4.58	7.53	4.94	7.59	5.24	7.53	8.07	6.44	7.53

C Range: 0 - 360 Deg

C Interval: 30.0 Deg

Test Speed: High

Temperature: 30℃

Operators: 卢棋浩

Test Date: 2020/12/14 9:39:20

G Range: 0 - 90 Deg

G Interval: 1.0 Deg

Test System: Huipu CPM-1800B Goniophotometer

Humidity: /

Test Distance: 7.76 m

Remarks:

LUMINOUS DISTRIBUTION INTENSITY DATA(Continue 1)

Gamma\C	C0	C30	C60	C90	C120	C150	C180	C210	C240	C270
G37	4.58	4.22	7.65	4.46	7.59	4.64	7.47	7.53	5.24	7.53
G38	4.28	3.97	7.05	4.28	7.41	4.34	7.41	7.47	4.58	7.41
G39	4.03	3.79	6.14	4.03	6.99	4.16	6.5	7.53	4.16	6.93
G40	3.79	3.49	5.54	3.85	6.14	3.91	5.54	6.99	3.91	5.6
G41	3.61	3.31	5.0	3.67	5.48	3.67	5.0	6.02	3.67	4.94
G42	3.43	3.19	4.58	3.55	4.94	3.49	4.76	5.18	3.43	4.58
G43	3.25	3.01	4.4	3.31	4.88	3.49	4.64	4.76	3.25	4.4
G44	3.07	2.89	4.16	3.25	4.7	3.43	4.52	4.64	3.13	4.16
G45	3.01	2.89	4.09	3.19	4.64	3.37	4.34	4.46	2.89	3.97
G46	2.95	2.77	3.97	3.19	4.52	3.49	4.22	4.28	2.83	3.85
G47	2.77	2.71	3.91	3.19	4.64	3.43	4.16	4.22	2.77	3.73
G48	2.77	2.65	3.73	3.01	4.7	3.43	4.09	4.09	2.71	3.61
G49	2.77	2.53	3.61	3.07	4.64	3.43	4.03	4.16	2.59	3.49
G50	2.65	2.53	3.49	2.95	4.58	3.37	3.85	4.03	2.53	3.49
G51	2.59	2.47	3.43	2.83	4.34	3.37	3.73	4.03	2.47	3.25
G52	2.59	2.47	3.37	2.77	4.16	3.19	3.61	3.91	2.53	3.13
G53	2.53	2.47	3.25	2.71	3.91	3.01	3.49	3.79	2.47	3.13
G54	2.53	2.41	3.13	2.71	3.73	2.83	3.31	3.73	2.41	3.07
G55	2.47	2.41	3.13	2.59	3.73	2.71	3.19	3.49	2.41	3.01
G56	2.41	2.35	3.01	2.59	3.61	2.71	3.13	3.37	2.41	2.95
G57	2.35	2.41	3.07	2.59	3.55	2.65	3.07	3.31	2.29	2.95
G58	2.41	2.41	2.95	2.53	3.43	2.59	3.01	3.25	2.35	2.89
G59	2.47	2.35	2.89	2.59	3.37	2.53	3.01	3.07	2.41	2.83
G60	2.41	2.35	2.89	2.47	3.25	2.53	2.95	3.07	2.29	2.83
G61	2.35	2.41	2.89	2.47	3.19	2.53	2.95	3.07	2.41	2.89
G62	2.41	2.41	2.77	2.47	3.13	2.47	2.83	3.01	2.35	2.77
G63	2.41	2.35	2.77	2.41	3.07	2.47	2.83	2.89	2.35	2.71
G64	2.41	2.35	2.71	2.41	3.07	2.47	2.83	2.89	2.35	2.71
G65	2.41	2.41	2.71	2.35	3.07	2.47	2.77	2.83	2.35	2.65
G66	2.41	2.35	2.65	2.35	3.01	2.47	2.83	2.89	2.29	2.71
G67	2.35	2.29	2.59	2.41	3.01	2.41	2.83	2.77	2.29	2.65
G68	2.41	2.35	2.65	2.41	2.89	2.41	2.71	2.71	2.29	2.59
G69	2.41	2.29	2.59	2.29	2.89	2.47	2.65	2.71	2.29	2.53
G70	2.41	2.35	2.65	2.35	2.77	2.35	2.71	2.65	2.35	2.59
G71	2.41	2.35	2.59	2.41	2.71	2.41	2.59	2.71	2.29	2.53
G72	2.41	2.35	2.59	2.35	2.71	2.41	2.53	2.65	2.29	2.53
G73	2.35	2.35	2.47	2.47	2.71	2.35	2.53	2.65	2.29	2.53

C Range: 0 - 360 Deg

C Interval: 30.0 Deg

Test Speed: High

Temperature: 30℃

Operators: 卢棋浩

Test Date: 2020/12/14 9:39:20

G Range: 0 - 90 Deg

G Interval: 1.0 Deg

Test System: Huipu CPM-1800B Goniophotometer

Humidity: /

Test Distance: 7.76 m

Remarks:

LUMINOUS DISTRIBUTION INTENSITY DATA(Continue 3)

Gamma\C	C300	C330	C360							
G0	13931.34	13691.8	13579.25							
G1	13727.26	13805.43	13356.26							
G2	11887.98	12697.54	10845.55							
G3	6935.32	8285.88	5903.07							
G4	2943.62	3721.69	2520.11							
G5	1513.51	1631.54	1387.96							
G6	1104.51	1146.84	1040.02							
G7	859.31	896.94	809.51							
G8	666.01	692.56	627.29							
G9	521.06	535.03	488.24							
G10	406.41	417.73	377.56							
G11	312.71	319.15	287.36							
G12	238.1	239.79	217.2							
G13	182.28	179.39	163.37							
G14	139.89	139.28	125.31							
G15	110.38	111.22	100.8							
G16	90.33	89.78	81.59							
G17	71.54	70.94	69.31							
G18	59.8	59.43	54.92							
G19	50.94	51.85	50.16							
G20	45.22	51.12	40.77							
G21	39.14	40.83	36.61							
G22	33.6	35.35	30.23							
G23	28.66	30.23	25.65							
G24	24.63	26.44	22.94							
G25	20.17	22.94	18.61							
G26	18.01	18.37	20.11							
G27	15.05	18.13	13.73							
G28	12.65	16.44	12.65							
G29	11.86	13.19	11.92							
G30	9.7	12.77	9.82							
G31	8.49	11.8	8.85							
G32	7.77	9.88	7.95							
G33	7.59	8.97	7.53							
G34	7.47	8.07	7.53							
G35	6.68	7.59	7.11							
G36	5.06	7.47	5.42							

C Range: 0 - 360 Deg

C Interval: 30.0 Deg

Test Speed: High

Temperature: 30℃

Operators: 卢棋浩

Test Date: 2020/12/14 9:39:20

G Range: 0 - 90 Deg

G Interval: 1.0 Deg

Test System: Huipu CPM-1800B Goniophotometer

Humidity: /

Test Distance: 7.76 m

Remarks:

LUMINOUS DISTRIBUTION INTENSITY DATA(Continue 4)

Gamma\C	C300	C330	C360							
G37	4.46	7.53	4.58							
G38	4.09	7.29	4.28							
G39	3.85	6.08	4.03							
G40	3.55	5.24	3.79							
G41	3.37	4.76	3.61							
G42	3.19	4.58	3.43							
G43	3.01	4.4	3.25							
G44	2.95	4.22	3.07							
G45	2.77	4.03	3.01							
G46	2.77	3.97	2.95							
G47	2.65	3.79	2.77							
G48	2.59	3.73	2.77							
G49	2.53	3.61	2.77							
G50	2.53	3.55	2.65							
G51	2.47	3.37	2.59							
G52	2.41	3.25	2.59							
G53	2.41	3.19	2.53							
G54	2.47	3.13	2.53							
G55	2.29	3.13	2.47							
G56	2.35	3.01	2.41							
G57	2.35	2.95	2.35							
G58	2.35	2.95	2.41							
G59	2.35	3.01	2.47							
G60	2.35	2.89	2.41							
G61	2.29	2.83	2.35							
G62	2.35	2.83	2.41							
G63	2.29	2.83	2.41							
G64	2.35	2.77	2.41							
G65	2.35	2.71	2.41							
G66	2.35	2.65	2.41							
G67	2.35	2.77	2.35							
G68	2.35	2.65	2.41							
G69	2.35	2.65	2.41							
G70	2.29	2.65	2.41							
G71	2.41	2.65	2.41							
G72	2.35	2.65	2.41							
G73	2.29	2.53	2.35							

C Range: 0 - 360 Deg

C Interval: 30.0 Deg

Test Speed: High

Temperature: 30℃

Operators: 卢棋浩

Test Date: 2020/12/14 9:39:20

G Range: 0 - 90 Deg

G Interval: 1.0 Deg

Test System: Huipu CPM-1800B Goniophotometer

Humidity: /

Test Distance: 7.76 m

Remarks:

