

LUMINAIRE PHOTOMETRIC TEST REPORT

Luminaire Property

Manufacturer: Ledoux
Luminaire Type: DSA2010-1
Lamp Type: XHP35
Luminous Width: 32.5 mm
Luminous Length: 32.5 mm
Luminous Height: 2 mm

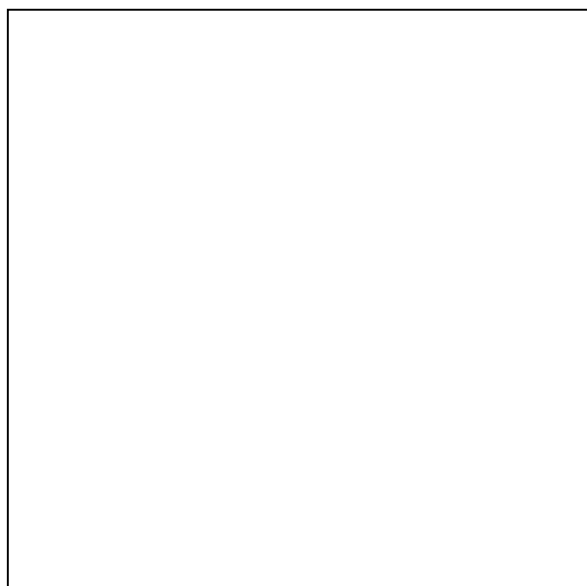
Voltage(V): 218.90 V
Current(A): 0.0840 A
Power(W): 10.12 W
Power Factor: 0.5490
Lamp Luminous Flux: 498.06

Photometric Results

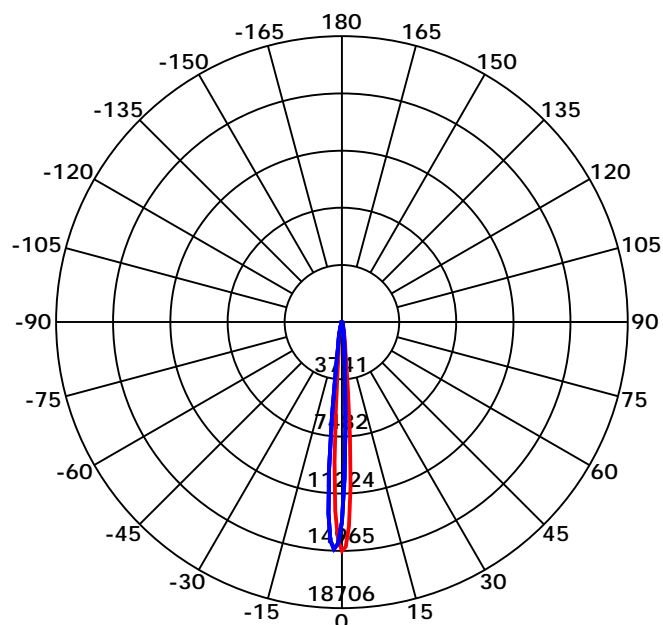
CIE Class: Direct
Luminaire Luminous Flux: 498.0557
Downward Ratio: 100.00%
Luminaire Efficacy Rating(LER): 49.21 lm/W
Beam Angle(50%) C0-180,C90-270: 7.5,7.6
Field Angle(10%) C0-180,C90-270: 15.4,15.3

Max. Intensity: 14964.80 cd
Max.Intensity Angle: C=180 Gamma=0
Upward Ratio: 0.00%
Efficacy: 100.00%
Center Intensity: 14964.80 cd

Picture of Luminaire



Luminous Intensity Distribution Curve



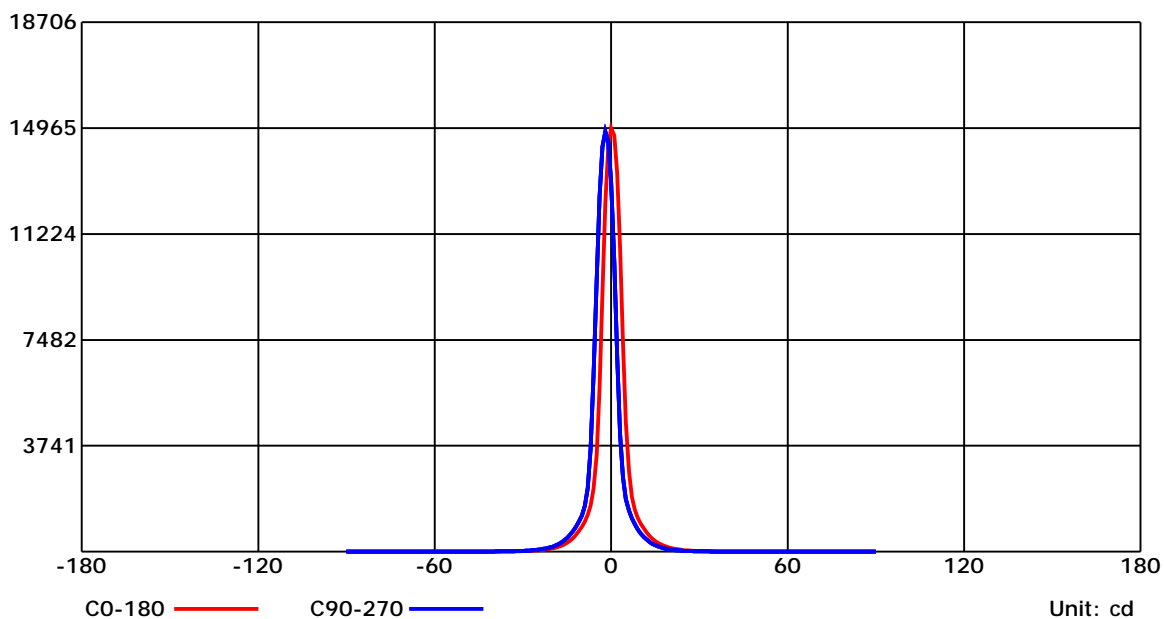
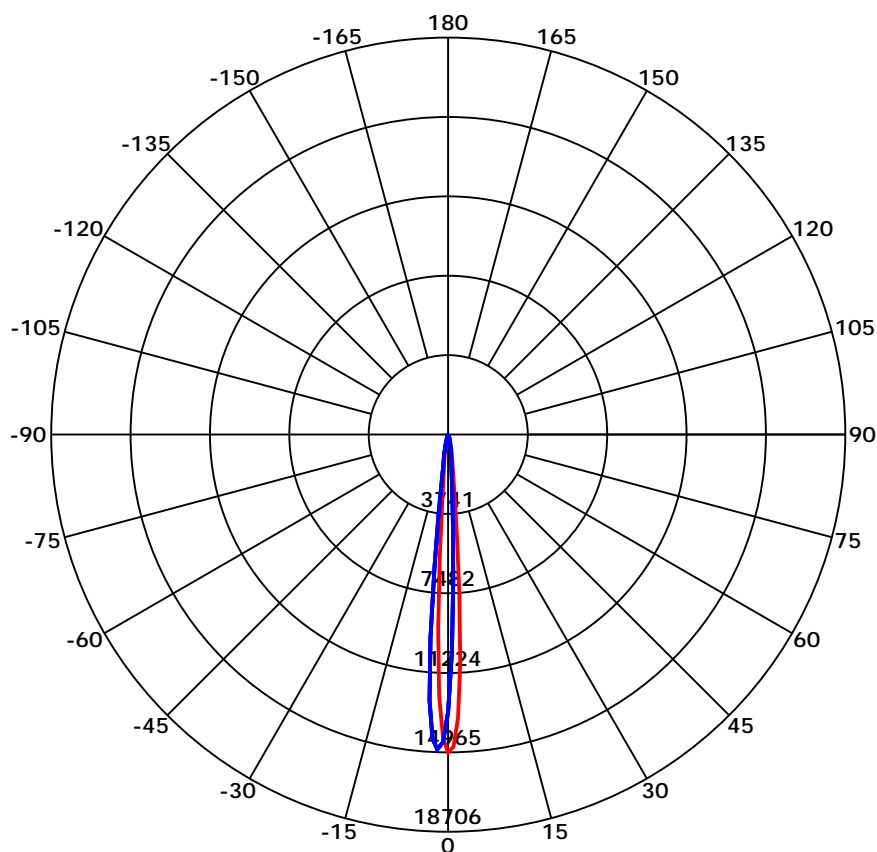
Beam Angle(50%) C0-180,C90-270: 7.5 deg,7.6 deg

C0-180 — C90-270

C Range: 0 - 360 Deg
C Interval: 30.0 Deg
Test Speed: High
Temperature: 30°C
Operators: 卢棋浩
Test Date: 2020/12/14 9:26:09

G Range: 0 - 90 Deg
G Interval: 1.0 Deg
Test System: Huipu CPM-1800B Goniophotometer
Humidity: /
Test Distance: 7.76 m
Remarks:

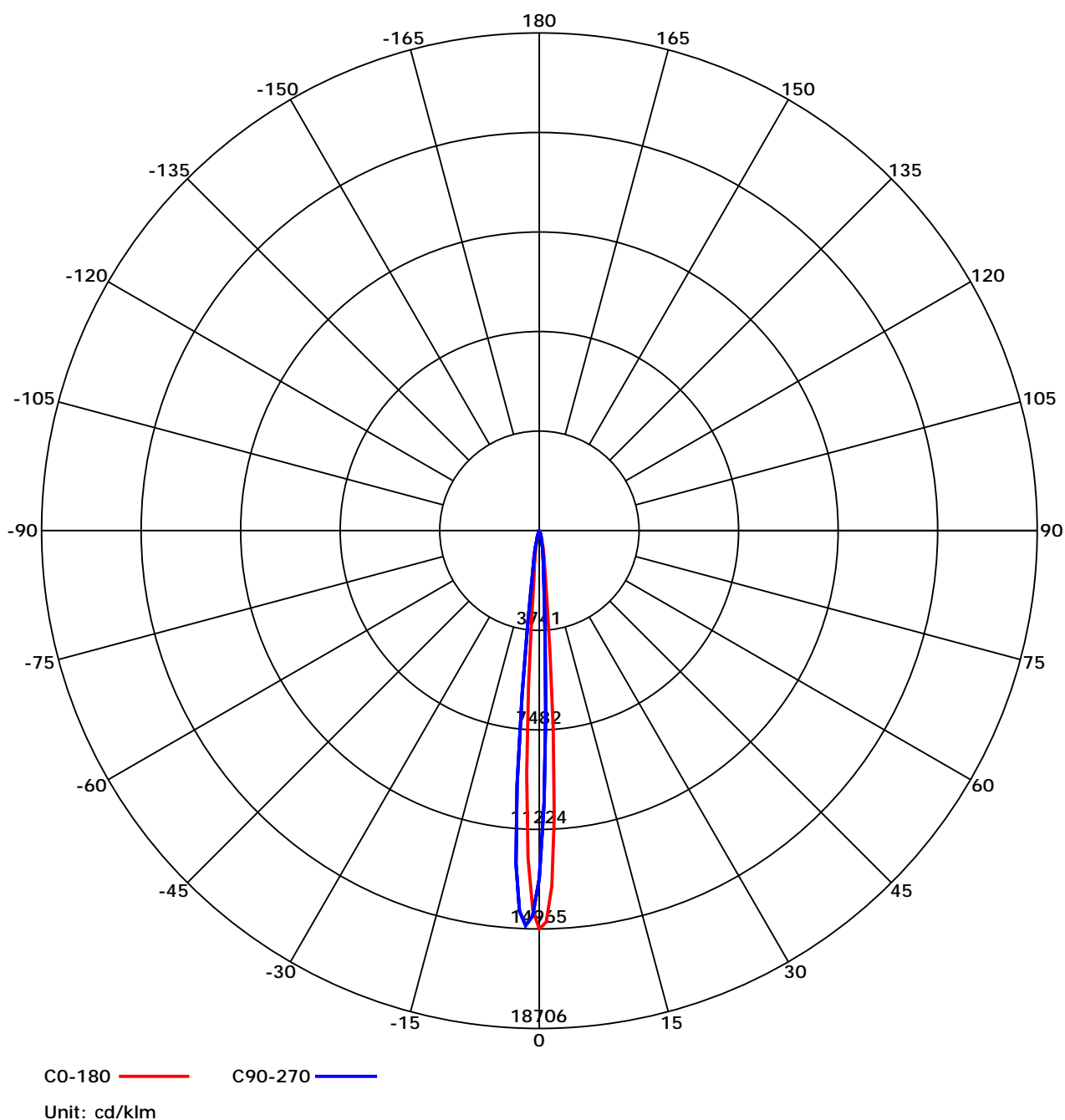
Luminous Intensity Distribution Curve



C Range: 0 - 360 Deg
 C Interval: 30.0 Deg
 Test Speed: High
 Temperature: 30°C
 Operators: 卢棋浩
 Test Date: 2020/12/14 9:26:09

G Range: 0 - 90 Deg
 G Interval: 1.0 Deg
 Test System: Huipu CPM-1800B Goniophotometer
 Humidity: /
 Test Distance: 7.76 m
 Remarks:

Luminous Intensity Distribution Curve



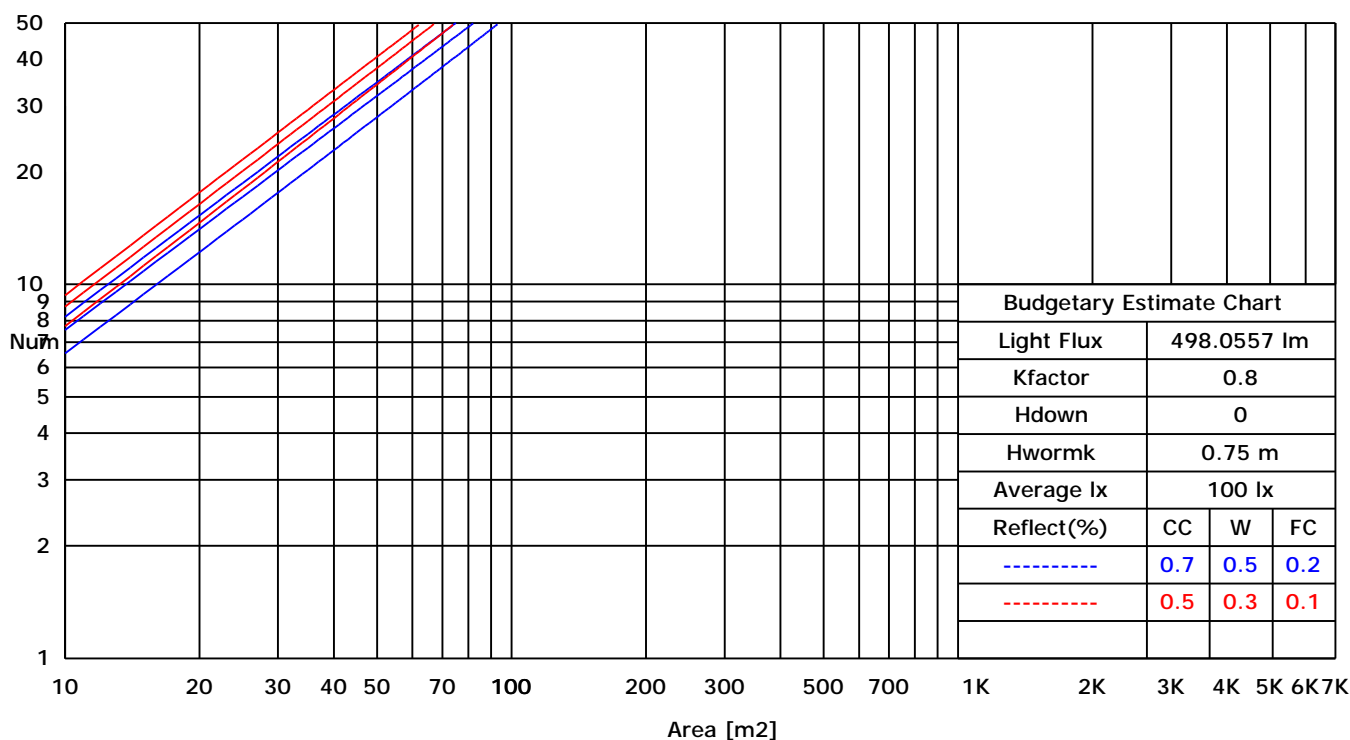
C Range: 0 - 360 Deg
 C Interval: 30.0 Deg
 Test Speed: High
 Temperature: 30°C
 Operators: 卢棋浩
 Test Date: 2020/12/14 9:26:09

G Range: 0 - 90 Deg
 G Interval: 1.0 Deg
 Test System: Huipu CPM-1800B Goniophotometer
 Humidity: /
 Test Distance: 7.76 m
 Remarks:

UTILIZATION FACTORS TABLE

RHOCC	80			70			50			30			10			0
RHOW	50	30	10	50	30	10	50	30	10	50	30	10	50	30	10	0
RCR	COEFFICIENTS OF UTILIZATION FOR RHOFC=20															
0	1.19	1.19	1.19	1.16	1.16	1.16	1.11	1.11	1.11	1.06	1.06	1.06	1.02	1.02	1.02	1.00
1	0.50	0.43	0.38	0.52	0.44	0.37	0.52	0.44	0.36	0.51	0.43	0.35	0.50	0.41	0.33	0.27
2	0.46	0.40	0.36	0.47	0.41	0.35	0.49	0.41	0.35	0.49	0.40	0.33	0.48	0.39	0.31	0.27
3	0.43	0.38	0.34	0.44	0.38	0.34	0.46	0.39	0.33	0.46	0.39	0.32	0.46	0.38	0.30	0.26
4	0.40	0.36	0.33	0.42	0.37	0.33	0.44	0.37	0.32	0.45	0.37	0.31	0.44	0.36	0.29	0.25
5	0.39	0.35	0.33	0.40	0.35	0.32	0.42	0.36	0.31	0.43	0.36	0.30	0.43	0.35	0.29	0.25
6	0.37	0.34	0.32	0.39	0.34	0.32	0.41	0.35	0.31	0.42	0.35	0.29	0.42	0.34	0.28	0.25
7	0.36	0.33	0.32	0.38	0.34	0.31	0.39	0.34	0.30	0.40	0.34	0.29	0.41	0.33	0.28	0.24
8	0.35	0.33	0.31	0.37	0.33	0.31	0.38	0.33	0.29	0.39	0.33	0.28	0.40	0.32	0.27	0.24
9	0.35	0.32	0.31	0.36	0.32	0.30	0.37	0.32	0.29	0.38	0.32	0.28	0.39	0.32	0.27	0.24
10	0.34	0.32	0.30	0.35	0.32	0.30	0.36	0.32	0.29	0.37	0.31	0.27	0.38	0.31	0.26	0.24

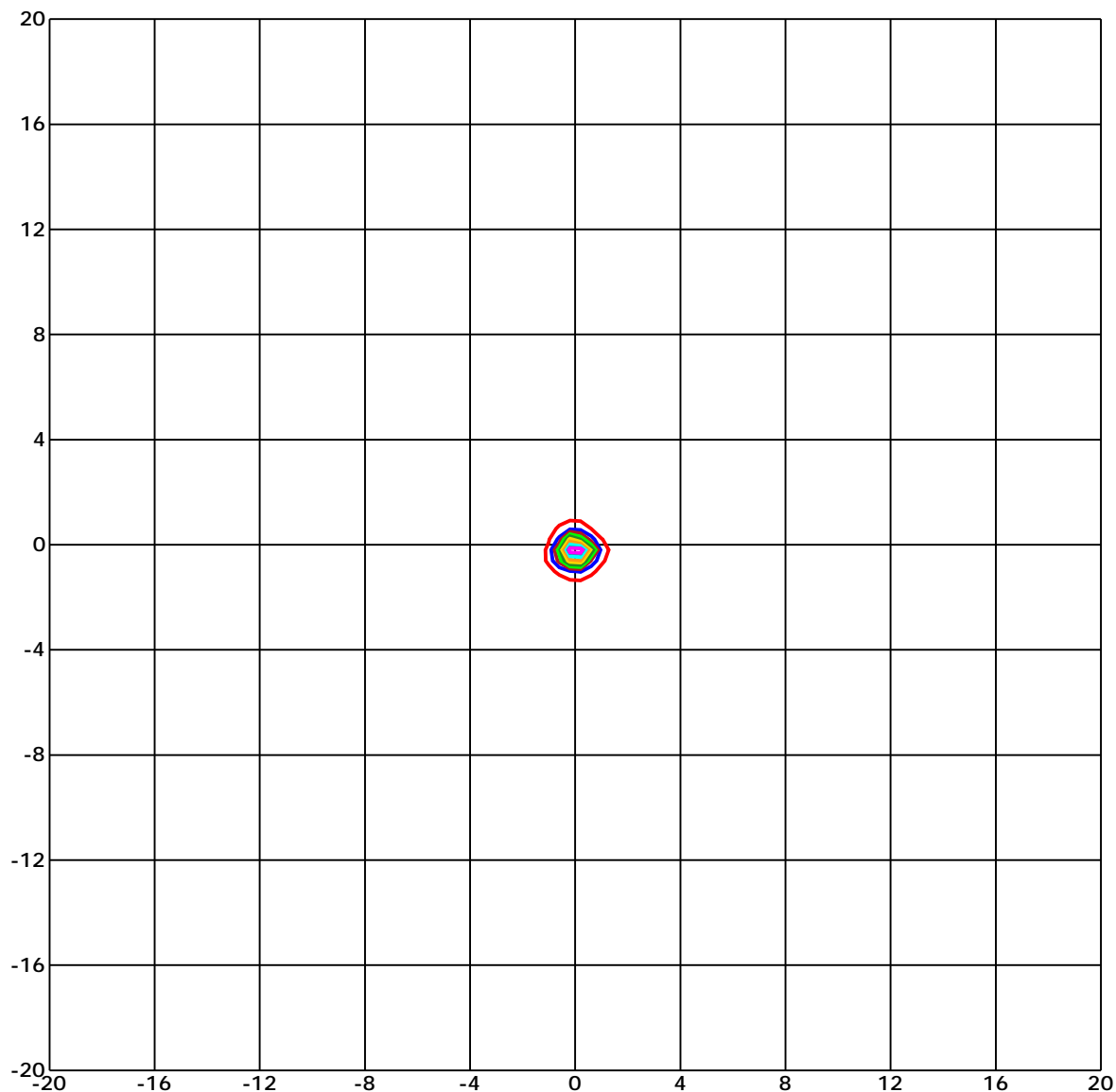
LUMINAIRE BUDGETARY ESTIMATE DIAGRAM



C Range: 0 - 360 Deg
 C Interval: 30.0 Deg
 Test Speed: High
 Temperature: 30°C
 Operators: 卢棋浩
 Test Date: 2020/12/14 9:26:09

G Range: 0 - 90 Deg
 G Interval: 1.0 Deg
 Test System: Huipu CPM-1800B Goniophotometer
 Humidity: /
 Test Distance: 7.76 m
 Remarks:

ISOLX DIAGRAM



Unit of illumination: lx Height of plane: 8.0(m)/26.25(ft)

- | | |
|--------------------------------|--------------------------------|
| — 215.119(1%E _{max}) | — 116.913(1%E _{max}) |
| — 210.443(1%E _{max}) | — 93.53(1%E _{max}) |
| — 187.06(1%E _{max}) | — 70.148(0%E _{max}) |
| — 163.678(1%E _{max}) | — 46.765(0%E _{max}) |
| — 140.295(1%E _{max}) | — 23.383(0%E _{max}) |

C Range: 0 - 360 Deg

C Interval: 30.0 Deg

Test Speed: High

Temperature: 30°C

Operators: 卢棋浩

Test Date: 2020/12/14 9:26:09

G Range: 0 - 90 Deg

G Interval: 1.0 Deg

Test System: Huipu CPM-1800B Goniophotometer

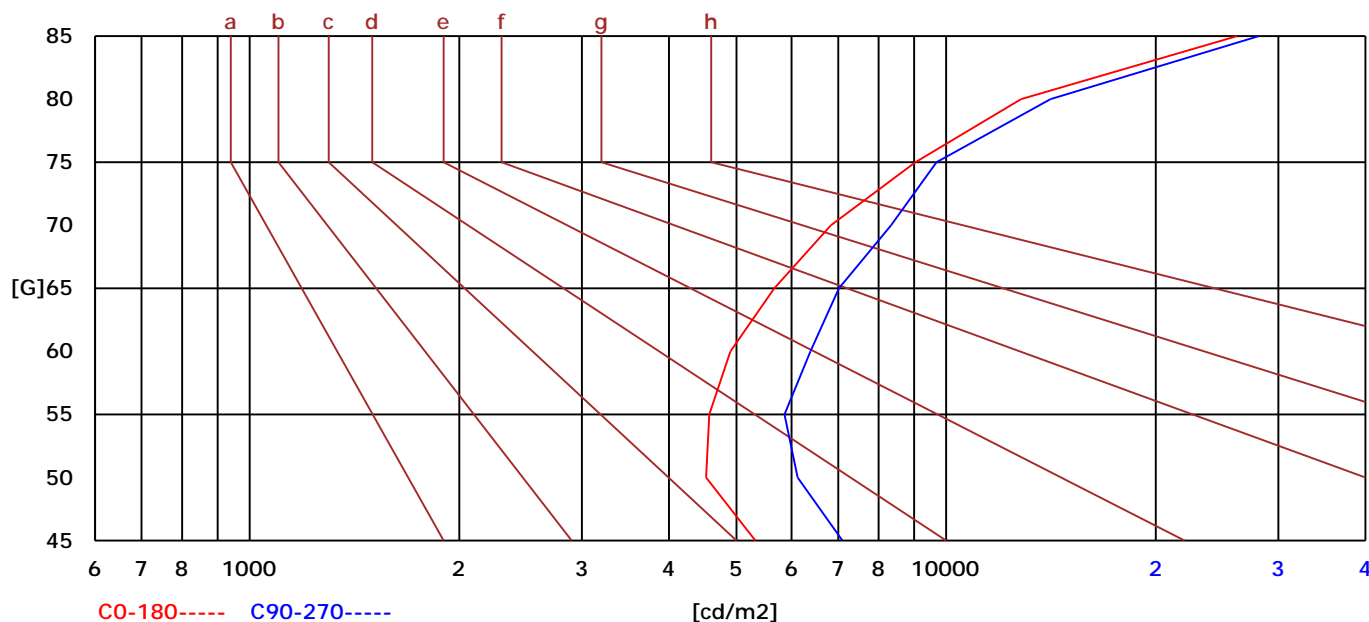
Humidity: /

Test Distance: 7.76 m

Remarks:

BRIGHT LIMIT DIAGRAM

C/G	45	50	55	60	65	70	75	80	85
C0	5321	4523	4572	4903	5666	6834	9031	12804	26165
C90	7095	6120	5864	6385	7015	8334	9692	14117	28127
Dazzle	Quality	Illuminance	---	---	---	---	---	---	---
1.15	A	2000	1000	500	<=300				
1.5	B		2000	1000	500	<=300			
1.85	C			2000	1000	500	<=300		
2.2	D				2000	1000	500	<=300	
2.55	E					2000	1000	500	<=300
---	---	a	b	c	d	e	f	g	h



C Range: 0 - 360 Deg

C Interval: 30.0 Deg

Test Speed: High

Temperature: 30°C

Operators: 卢棋浩

Test Date: 2020/12/14 9:26:09

G Range: 0 - 90 Deg

G Interval: 1.0 Deg

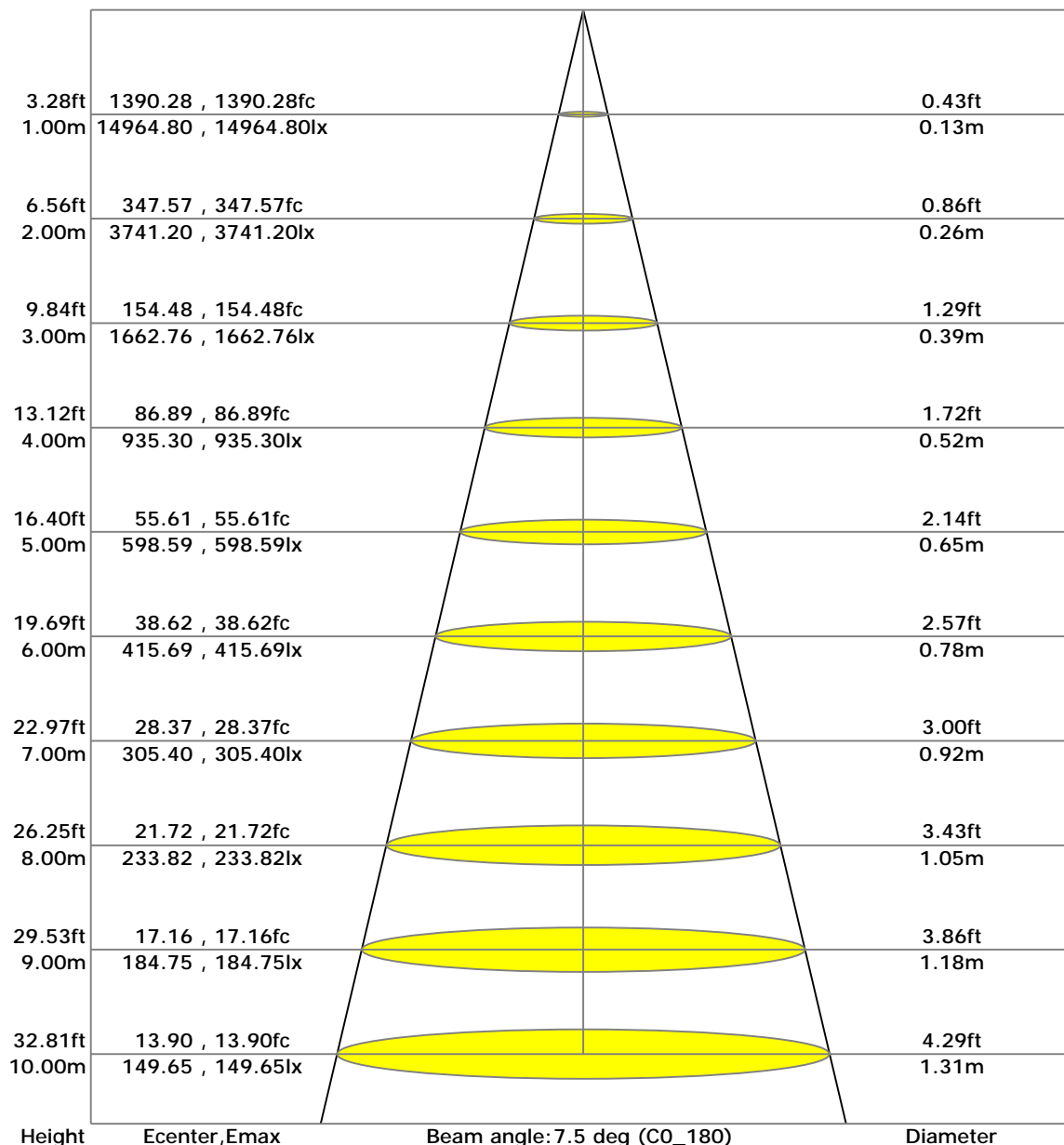
Test System: Huipu CPM-1800B Goniophotometer

Humidity: /

Test Distance: 7.76 m

Remarks:

LX-DISTANCE DIAGRAM



C Range: 0 - 360 Deg

C Interval: 30.0 Deg

Test Speed: High

Temperature: 30°C

Operators: 卢棋浩

Test Date: 2020/12/14 9:26:09

G Range: 0 - 90 Deg

G Interval: 1.0 Deg

Test System: Huipu CPM-1800B Goniophotometer

Humidity: /

Test Distance: 7.76 m

Remarks:

UGR(Unified Glare Rating) TABLE

RHOCC	70	70	50	50	30	70	70	50	50	30
RHOW	70	70	50	50	30	70	70	50	50	30
RHOF	20	20	20	20	20	20	20	20	20	20
Room Size X Y	Viewed Endwise					Viewed Crosswise				
2H 2H	8.98	9.10	9.19	9.29	9.53	9.60	9.72	9.80	9.91	10.15
3H	9.35	9.47	9.56	9.66	9.91	9.84	9.96	10.05	10.15	10.40
4H	9.48	9.60	9.69	9.80	10.05	9.93	10.05	10.14	10.25	10.50
6H	9.54	9.67	9.76	9.87	10.13	9.98	10.10	10.20	10.30	10.56
8H	9.53	9.66	9.76	9.86	10.12	9.96	10.09	10.19	10.30	10.56
12H	9.52	9.65	9.75	9.86	10.12	9.95	10.08	10.18	10.29	10.55
4H 2H	13.09	13.21	13.30	13.41	13.66	13.64	13.76	13.86	13.96	14.21
3H	13.76	13.88	13.98	14.09	14.35	14.24	14.37	14.47	14.58	14.84
4H	14.05	14.18	14.29	14.40	14.66	14.48	14.61	14.72	14.83	15.09
6H	14.30	14.43	14.55	14.65	14.92	14.67	14.79	14.91	15.02	15.29
8H	14.39	14.52	14.64	14.75	15.02	14.73	14.86	14.98	15.09	15.37
12H	14.43	14.56	14.69	14.79	15.07	14.76	14.89	15.02	15.13	15.41
8H 4H	15.92	16.04	16.14	16.25	16.51	16.28	16.41	16.51	16.61	16.87
6H	17.85	17.97	18.11	18.22	18.50	18.19	18.32	18.46	18.56	18.85
8H	18.07	18.20	18.34	18.45	18.73	18.38	18.51	18.66	18.76	19.05
12H	18.26	18.38	18.54	18.65	18.94	18.54	18.66	18.82	18.92	19.22
12H 4H	18.80	18.92	19.05	19.16	19.44	19.05	19.18	19.31	19.42	19.70
6H	19.44	19.56	19.71	19.82	20.10	19.69	19.82	19.97	20.07	20.36

C Range: 0 - 360 Deg

C Interval: 30.0 Deg

Test Speed: High

Temperature: 30℃

Operators: 卢棋浩

Test Date: 2020/12/14 9:26:09

G Range: 0 - 90 Deg

G Interval: 1.0 Deg

Test System: Huipu CPM-1800B Goniophotometer

Humidity: /

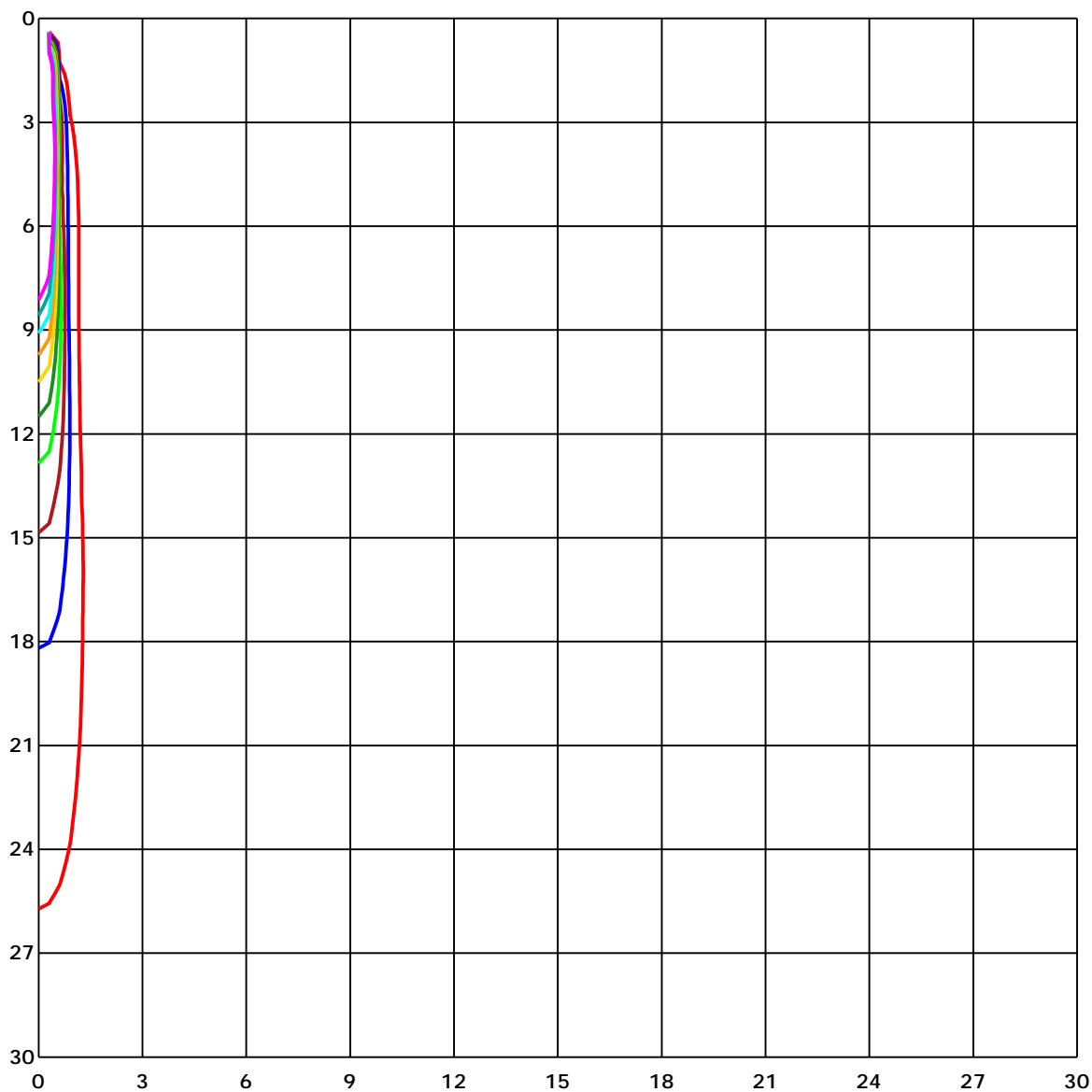
Test Distance: 7.76 m

Remarks:

ZONAL LUMINOUS FLUX TABLE

Gamma [deg]	I _{mean} [cd]	Zonal Flux [lm]	Sum Flux [lm]	Zonal Flux [%]	Sum Flux [%]
0	13772.31	0.00	0.00	0.00	0.00
5	7103.23	205.36	205.36	41.23	41.23
10	1166.09	141.78	347.14	28.47	69.70
15	424.89	69.09	416.23	13.87	83.57
20	149.18	34.40	450.63	6.91	90.48
25	56.49	16.28	466.90	3.27	93.75
30	24.61	8.11	475.02	1.63	95.37
35	12.60	4.63	479.65	0.93	96.30
40	7.40	2.80	482.45	0.56	96.87
45	5.50	2.22	484.67	0.45	97.31
50	4.26	1.85	486.52	0.37	97.68
55	3.41	1.58	488.10	0.32	98.00
60	3.08	1.46	489.55	0.29	98.29
65	2.91	1.43	490.99	0.29	98.58
70	2.73	1.41	492.40	0.28	98.86
75	2.62	1.39	493.79	0.28	99.14
80	2.55	1.38	495.16	0.28	99.42
85	2.59	1.40	496.56	0.28	99.70
90	2.78	1.49	498.06	0.30	100.00

SPACE ISOLX DIAGRAM



Unit of illumination: lx

- | | |
|-----------|-----------|
| — 226.258 | — 113.129 |
| — 203.632 | — 90.503 |
| — 181.007 | — 67.877 |
| — 158.381 | — 45.252 |
| — 135.755 | — 22.626 |

C Range: 0 - 360 Deg

C Interval: 30.0 Deg

Test Speed: High

Temperature: 30°C

Operators: 卢棋浩

Test Date: 2020/12/14 9:26:09

G Range: 0 - 90 Deg

G Interval: 1.0 Deg

Test System: Huipu CPM-1800B Goniophotometer

Humidity: /

Test Distance: 7.76 m

Remarks:

LUMINOUS DISTRIBUTION INTENSITY DATA

Gamma\C	C0	C30	C60	C90	C120	C150	C180	C210	C240	C270
G0	14964.8	12628.9	13480.19	13071.74	14225.32	14262.9	14964.8	12628.9	13480.19	13071.74
G1	14702.91	9933.32	11061.01	10240.43	12303.84	12406.93	14267.24	13989.63	14519.19	14487.21
G2	13366.02	6760.75	7814.98	6897.75	9274.9	9397.5	12306.55	14256.76	14564.65	14846.35
G3	10758.48	4131.47	4831.86	4166.03	6000.14	6068.67	9152.77	13522.95	13647.54	14314.33
G4	7426.64	2630.06	2980.11	2638.74	3657.68	3721.57	5799.98	11527.16	11391.85	12544.11
G5	4581.05	1851.21	2031.86	1854.88	2363.78	2383.47	3415.96	8536.99	8122.81	9589.05
G6	2826.55	1449.8	1560.24	1445.83	1735.71	1738.66	2208.54	5339.86	4980.06	6176.16
G7	1939.43	1182.85	1257.46	1174.0	1369.77	1356.28	1635.15	3158.59	2953.37	3633.65
G8	1479.37	983.96	1033.76	971.13	1112.28	1098.79	1303.29	2029.88	1921.36	2241.6
G9	1199.35	808.9	847.38	795.84	904.89	891.04	1069.77	1530.97	1447.21	1618.41
G10	997.02	666.43	694.73	651.55	741.88	722.61	882.67	1231.63	1163.71	1277.28
G11	828.17	547.74	567.55	528.47	603.86	582.36	723.45	1017.44	966.25	1055.07
G12	681.9	448.44	459.28	431.1	491.32	471.68	589.29	836.24	791.68	875.8
G13	558.7	367.93	369.62	346.97	401.29	380.76	479.99	685.7	645.53	729.05
G14	456.45	300.79	299.64	278.27	326.92	307.59	390.33	558.16	523.29	600.85
G15	372.57	242.62	237.56	224.01	265.8	245.15	314.28	453.86	420.44	492.76
G16	305.42	199.2	193.48	179.81	214.8	198.18	252.67	363.9	334.27	399.24
G17	248.76	161.02	158.43	145.85	172.7	160.78	205.52	295.31	266.1	322.89
G18	204.5	133.08	131.82	118.75	141.99	131.58	169.69	236.53	211.85	261.95
G19	167.71	110.62	108.09	96.05	115.98	106.22	140.01	191.85	171.92	213.59
G20	137.3	91.05	90.45	79.85	95.93	87.86	116.1	156.26	140.49	175.53
G21	112.67	74.91	72.62	64.49	79.73	71.12	95.14	129.65	116.1	147.23
G22	92.92	61.36	59.92	53.59	67.62	59.19	78.34	106.65	95.02	121.34
G23	80.21	50.04	49.26	43.6	54.5	49.8	65.04	88.58	77.8	100.44
G24	64.31	40.89	41.25	35.17	45.34	38.72	54.14	72.14	64.43	81.72
G25	52.81	34.14	35.05	29.51	38.48	33.3	44.68	59.68	54.08	69.43
G26	43.66	28.84	30.71	25.17	33.06	28.3	38.48	49.68	44.92	58.11
G27	36.79	24.75	28.18	22.64	28.12	23.91	32.94	41.73	38.48	49.02
G28	30.23	21.62	23.42	19.09	23.61	21.14	28.24	34.75	33.24	40.17
G29	25.47	18.07	20.59	17.82	20.29	18.31	23.91	29.93	28.3	34.44
G30	22.04	20.65	18.01	18.43	18.01	18.31	21.38	27.28	23.61	29.57
G31	18.07	12.83	19.87	13.07	19.87	14.39	18.37	23.0	20.65	25.77
G32	19.87	11.74	13.61	12.53	13.85	12.65	18.31	19.99	18.07	22.94
G33	12.65	9.39	12.71	10.18	12.71	11.14	14.27	17.88	20.29	19.27
G34	11.02	8.19	11.14	8.55	11.56	9.15	12.59	20.11	12.89	18.01
G35	9.27	7.59	9.45	7.59	9.63	7.95	12.04	13.79	12.28	14.09
G36	8.07	7.59	8.73	7.65	8.85	7.53	9.94	12.59	9.57	12.65

C Range: 0 - 360 Deg

C Interval: 30.0 Deg

Test Speed: High

Temperature: 30℃

Operators: 卢棋浩

Test Date: 2020/12/14 9:26:09

G Range: 0 - 90 Deg

G Interval: 1.0 Deg

Test System: Huipu CPM-1800B Goniophotometer

Humidity: /

Test Distance: 7.76 m

Remarks:

LUMINOUS DISTRIBUTION INTENSITY DATA(Continue 1)

Gamma\C	C0	C30	C60	C90	C120	C150	C180	C210	C240	C270
G37	7.53	7.47	7.95	7.47	8.01	7.41	9.09	11.74	8.31	11.44
G38	7.59	6.62	7.53	7.23	7.59	7.41	8.37	9.39	7.65	9.7
G39	7.59	5.6	7.53	5.9	7.47	6.62	7.83	8.49	7.53	8.91
G40	6.62	4.88	7.47	5.06	7.47	5.6	7.59	7.89	7.53	8.01
G41	5.36	4.64	7.47	4.64	7.47	4.94	7.41	7.53	6.99	7.65
G42	4.82	4.4	7.17	4.34	7.41	4.58	7.47	7.65	6.26	7.47
G43	4.46	4.22	6.74	4.09	6.86	4.28	7.41	7.59	5.18	7.47
G44	4.34	4.03	5.54	3.91	5.84	3.97	7.11	7.59	4.76	7.47
G45	4.22	3.97	5.06	3.73	5.3	3.91	6.2	7.53	4.52	7.47
G46	4.28	3.79	4.7	3.67	4.94	3.79	5.6	6.8	4.46	7.41
G47	4.16	3.61	4.52	3.37	4.64	3.61	5.06	5.9	4.52	7.47
G48	3.91	3.37	4.28	3.37	4.4	3.49	4.76	5.36	4.64	7.29
G49	3.73	3.07	4.16	3.13	4.22	3.37	4.58	5.0	4.58	7.17
G50	3.61	3.07	4.03	3.07	4.16	3.07	4.34	4.64	4.58	6.86
G51	3.37	2.95	3.91	3.01	3.91	3.01	4.22	4.46	4.34	5.72
G52	3.19	2.89	3.85	2.89	3.85	2.83	4.03	4.22	4.16	4.94
G53	3.01	2.83	3.73	2.83	3.79	2.65	3.85	4.03	3.97	4.64
G54	2.95	2.89	3.61	2.83	3.73	2.53	3.73	3.97	3.67	4.46
G55	2.83	2.77	3.61	2.77	3.55	2.59	3.61	3.91	3.49	4.16
G56	2.83	2.71	3.49	2.71	3.55	2.47	3.55	3.79	3.31	4.09
G57	2.77	2.71	3.49	2.65	3.43	2.53	3.43	3.73	3.19	3.97
G58	2.71	2.59	3.37	2.65	3.37	2.59	3.37	3.61	3.13	3.91
G59	2.65	2.65	3.43	2.71	3.31	2.53	3.31	3.55	3.01	3.85
G60	2.59	2.59	3.37	2.59	3.37	2.53	3.25	3.43	3.01	3.67
G61	2.71	2.59	3.37	2.65	3.25	2.53	3.25	3.43	2.89	3.67
G62	2.59	2.53	3.25	2.59	3.31	2.53	3.25	3.37	2.77	3.61
G63	2.59	2.53	3.25	2.59	3.31	2.47	3.13	3.31	2.65	3.67
G64	2.59	2.47	3.07	2.65	3.19	2.47	3.13	3.31	2.65	3.79
G65	2.53	2.53	3.01	2.59	3.13	2.47	3.01	3.25	2.71	3.67
G66	2.53	2.41	3.01	2.53	3.13	2.47	3.07	3.19	2.71	3.55
G67	2.53	2.47	3.01	2.53	3.13	2.47	3.01	3.13	2.65	3.55
G68	2.47	2.53	2.89	2.41	2.95	2.41	2.95	3.07	2.59	3.43
G69	2.47	2.53	2.89	2.53	3.01	2.41	2.89	3.01	2.59	3.25
G70	2.47	2.47	2.95	2.53	3.01	2.35	2.83	3.01	2.59	3.13
G71	2.47	2.41	2.89	2.53	2.89	2.41	2.77	2.95	2.53	3.01
G72	2.41	2.41	2.83	2.47	2.77	2.41	2.77	3.01	2.53	3.07
G73	2.47	2.47	2.77	2.41	2.83	2.41	2.71	2.95	2.53	3.01

C Range: 0 - 360 Deg

C Interval: 30.0 Deg

Test Speed: High

Temperature: 30℃

Operators: 卢棋浩

Test Date: 2020/12/14 9:26:09

G Range: 0 - 90 Deg

G Interval: 1.0 Deg

Test System: Huipu CPM-1800B Goniophotometer

Humidity: /

Test Distance: 7.76 m

Remarks:

LUMINOUS DISTRIBUTION INTENSITY DATA(Continue 3)

Gamma\C	C300	C330	C360						
G0	14225.32	14262.9	14964.8						
G1	14863.87	14868.03	14702.91						
G2	14579.28	14520.57	13366.02						
G3	13249.56	13082.94	10758.48						
G4	10560.18	10360.68	7426.64						
G5	7231.23	7147.05	4581.05						
G6	4423.65	4376.62	2826.55						
G7	2738.22	2731.35	1939.43						
G8	1872.23	1881.56	1479.37						
G9	1432.34	1447.03	1199.35						
G10	1154.25	1160.76	997.02						
G11	951.38	956.07	828.17						
G12	781.44	786.68	681.9						
G13	642.4	649.93	558.7						
G14	525.88	530.46	456.45						
G15	430.68	428.81	372.57						
G16	346.73	345.11	305.42						
G17	280.01	278.57	248.76						
G18	225.33	223.35	204.5						
G19	184.39	183.72	167.71						
G20	151.93	150.36	137.3						
G21	123.27	123.81	112.67						
G22	100.98	100.92	92.92						
G23	81.9	83.4	80.21						
G24	70.03	69.79	64.31						
G25	56.06	59.31	52.81						
G26	50.76	48.84	43.66						
G27	38.72	41.07	36.79						
G28	33.36	34.93	30.23						
G29	28.24	29.99	25.47						
G30	23.79	26.86	22.04						
G31	20.35	22.94	18.07						
G32	17.94	19.33	19.87						
G33	14.51	17.88	12.65						
G34	12.53	15.42	11.02						
G35	10.36	12.77	9.27						
G36	8.73	11.74	8.07						

C Range: 0 - 360 Deg

C Interval: 30.0 Deg

Test Speed: High

Temperature: 30℃

Operators: 卢棋浩

Test Date: 2020/12/14 9:26:09

G Range: 0 - 90 Deg

G Interval: 1.0 Deg

Test System: Huipu CPM-1800B Goniophotometer

Humidity: /

Test Distance: 7.76 m

Remarks:

LUMINOUS DISTRIBUTION INTENSITY DATA(Continue 4)

Gamma\C	C300	C330	C360							
G37	7.77	9.57	7.53							
G38	7.53	8.61	7.59							
G39	7.41	7.95	7.59							
G40	7.05	7.47	6.62							
G41	5.84	7.59	5.36							
G42	5.0	7.59	4.82							
G43	4.52	7.41	4.46							
G44	4.22	7.23	4.34							
G45	4.09	6.2	4.22							
G46	3.91	5.78	4.28							
G47	3.73	5.36	4.16							
G48	3.67	5.0	3.91							
G49	3.43	4.7	3.73							
G50	3.31	4.4	3.61							
G51	3.13	4.22	3.37							
G52	2.95	4.09	3.19							
G53	2.83	3.97	3.01							
G54	2.71	3.85	2.95							
G55	2.65	3.73	2.83							
G56	2.59	3.67	2.83							
G57	2.59	3.55	2.77							
G58	2.59	3.37	2.71							
G59	2.53	3.37	2.65							
G60	2.59	3.19	2.59							
G61	2.53	3.19	2.71							
G62	2.47	3.25	2.59							
G63	2.47	3.13	2.59							
G64	2.47	3.07	2.59							
G65	2.41	3.13	2.53							
G66	2.41	3.01	2.53							
G67	2.41	2.95	2.53							
G68	2.35	2.95	2.47							
G69	2.41	2.83	2.47							
G70	2.47	2.95	2.47							
G71	2.35	2.77	2.47							
G72	2.41	2.77	2.41							
G73	2.41	2.83	2.47							

C Range: 0 - 360 Deg

C Interval: 30.0 Deg

Test Speed: High

Temperature: 30℃

Operators: 卢棋浩

Test Date: 2020/12/14 9:26:09

G Range: 0 - 90 Deg

G Interval: 1.0 Deg

Test System: Huipu CPM-1800B Goniophotometer

Humidity: /

Test Distance: 7.76 m

Remarks:

